

CITRUS CANCKER DETECTION

Courtesy of



Figure 1. Leaf infected with citrus canker.



Figure 2. Ground view of a test site.



Figure 3. Aircraft used for citrus canker project.



Figure 4. Aerial photo of citrus grove from 3,000 feet.

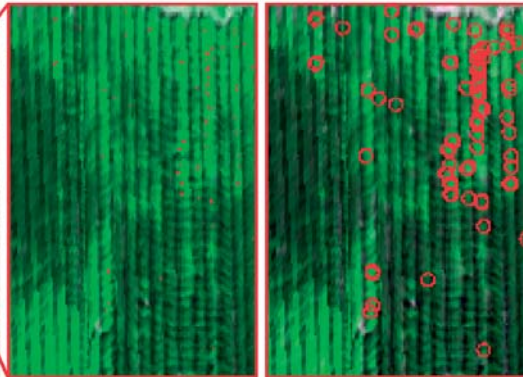


Figure 5. Hyperspectral image processed to highlight canker infestations in red.

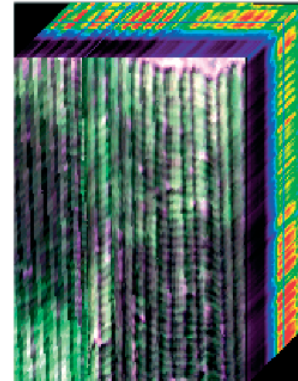


Figure 6. Sample cube.

Hyperspectral imaging captures many layers of target spectra at once, as shown in the sample cube, enabling identification via "bar code" type computer process from the air.